

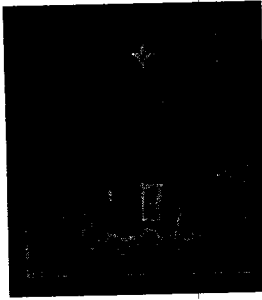
The Leaflet

December 2006

Messengers and Messages

Pastor Jennifer

Volume 12
Issue 3



Inside this Issue:

Administration	9
Calendar	8
Discipleship	5
Nurture	5
Outreach	4
Schedules	7
Staff/Committees	12
Thank You	11
Worship/Music	2

Making the "right" decisions in our lives is important. I don't think that anyone would argue that. Yet, making the "right" decision is not always easy, or clear. We are bombarded each day with messages that the world wants us to have, and if we're not careful, then making the "right" decision can be in jeopardy.

There seems to be two parts of it. Listening to the "right" people, and finding the "right" message. Few would argue that following Hitler was following the wrong person, and listening

to his message was a recipe for disaster. Yet at the time, it was difficult to see exactly who Hitler was and where his message would lead. And certainly there were those who didn't want to know.

When it comes to their children, most parents hope and pray that their children will choose friends who make wise decisions, live good lives, and share their spirits, enthusiasm, ambition, support, love... with their friends.

Yet, we've all watched a little one make a bad choice, hang out with the wrong friends, and ending up disappointed and hurt.

We're entering the Advent season, and I know that many of you are preparing for Christmas. You're putting up decorations, purchasing gifts, writing Christmas cards, making food, and wrapping gifts. Our lives are full this time of year.

Our lives are also full of messages and mes-

WORSHIP & MUSIC

sengers, that call for our attention.

This Advent Season, I invite you to make room for the voice of God at Tree of Life and the message of Jesus Christ. It is rooted in scripture, and its story told for centuries about the birth of a baby boy who would one day change the world.

Join us for...

Dec. 1 Messages and Messengers, Luke 3:1-6,

Dec. 8 The Courage of Joseph, Matthew 1:18-25,

Dec. 17 The Faith of Mary Luke 1:26-38,

Dec. 24 (10:30 a.m. BME) The Hope of the Messengers, Luke 2:8-20, and

Dec. 24 (5 p.m. TOL) God's Love in a Manger

Come and hear the story of the Word made flesh!

Prayer Possibilities...

First, I thank my God December 10, 2006
through Jesus Christ for Advent 2
all of you, because your **Grace Lutheran Church**

faith is proclaimed Rev. Paul C. Lundmark
throughout the world. **Lutheran Volunteer**
For God, whom I serve **Corps**

with my spirit by an- December 17, 2006
nouncing the gospel of Advent 3

his Son, is my witness **St. Mark's Lutheran**
that without ceasing I **Church**

remember you in my Rev. Fred N. Melton
prayers... Romans 1:8-

9 **St. Paul's Lutheran**

This month we lift up
these partners in minis-
try from the Delmarva
Conference of the Dela-
ware-Maryland Synod,
ELCA.

Rev. John W. Keating
Rev. Greg Eidell
December 24, 2006
Advent 4

Hope Lutheran Church
Lutheran Community
Services

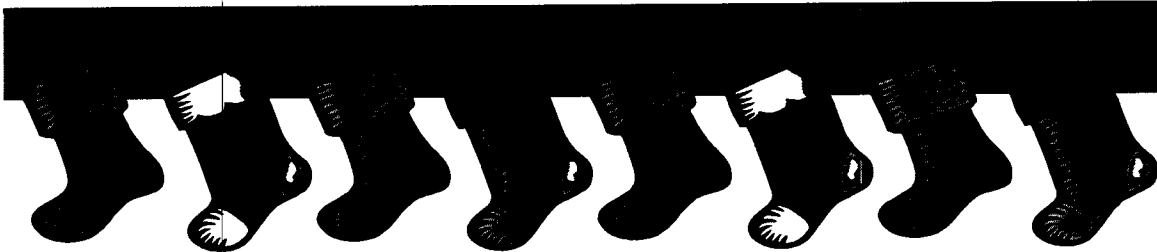
December 3, 2006

Advent 1

Talbot Parishes

St. Peter's Lutheran
Church

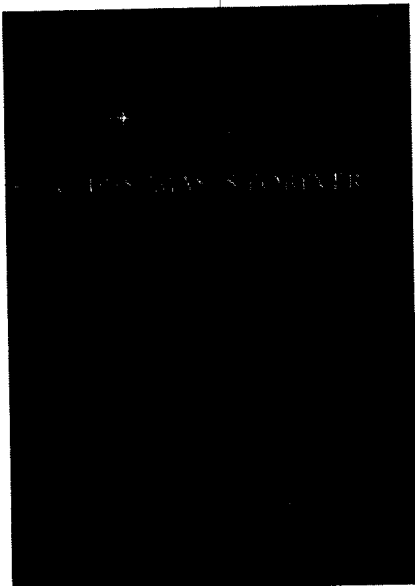
Rev. James B. Davis
Rev. Harry Wolpert



**Tree Of Life Celebrates Christmas With Our
Annual Christmas Cantata:
"Christmas Is Forever"**

Unchanging Love In An Ever-Changing World

Created by Gary Rhodes & Claire Cloninger



The Christmas story never changes. Christmas and the One whom it celebrates is secure, lasting, eternal and forever. Christmas Is Forever, the latest Christmas musical from best-selling creators Gary Rhodes and Claire Cloninger, joyfully celebrates the unchanging love of Christmas that keeps us steady in a changing world.

**Sunday December 17th 4:00 P.M.
Tree of Life Ministry Center
1 S. Broad St**

**Christmas Cookie Refreshments Hosted by the
Seniors Group**

OUTREACH



Food Bank Donations

The following items were donated to Lutheran Community Services this month.

Thank you to all who participated.

- 5 cans of tuna
- 1 can of fruit
- 2 bottles of salad dressing
- 1 cake mix
- 15 cans of vegetables
- 1 box of pasta
- 2 jars of salsa
- 1 jar of mayonnaise

- 1 can of soup
- 1 can condensed milk
- 3 cans of beans
- 3 boxes mac 'n cheese
- 1 box of beef and rice
- 3 cans tomato paste.



Hats & Mittens



Actually its hats, mittens, gloves and scarves. Yep, its that time of year again, and we will be collecting hats, mittens, gloves and scarves to give to children in need to help them keep warm this winter. There will be a container at the back of the room on Sunday mornings for you to place your warm donations. We will then forward the warm donations to Lutheran Community Services, who will distribute them to the children who need them.



Adopt a Family

Tree of Life will once again be adopting a family for Christmas. We will be receiving the details regarding the family soon. Keep an eye out for more information or contact Mary Ellen Raun.



NURTURE



Newsletter Assembly

Interested in helping assemble the newsletter? We meet on the last Tuesday of each month from **10 a.m. to Noon.**

Seniors Groups

The Seniors Group will be meeting on December 14th at the Middletown Diner for a luncheon celebrating Thanksgiving and Christmas. Please come and join the festivities of the seasons. Contact Jim Raun for more details.

DISCIPLESHIP

CHANGES IN OUR SUNDAY SCHOOL CLASSES!

There are some new changes to our Sunday School classes. Please check out the details below and join us as we learn about God.

Grades 3 through 6 Cindy Koch and Linda Bonet

Grades 7 through 12 Nancy Nadel and Pam Nichols

Youth Group

(for those in 7th grade and up)

December 3, 2006

Join the Outreach Committee as we hand out hot chocolate on Broad Street for the Christmas Parade. Sign up with Pastor Jennifer.



Confirmation (Grades 7 and 8)

Check our schedule...

- | | | |
|----------|----|------------------------------------|
| December | 3 | The Apostle's Creed: Article One |
| January | 7 | The Apostle's Creed: Article Two |
| | 21 | The Apostle's Creed: Article Three |

TREE OF LIFE LUTHERAN CHURCH

Live Nativity and Caroling

- What:** Be a part of our **LIVE** Nativity Scene. Then, join the Tree of Life choir for caroling on the square in downtown Middletown. After caroling, enjoy a movie and popcorn back at the Ministry Center.
- When:** Friday, December 22nd - 6:30 p.m. to 9:00 p.m.
- Who:** We welcome children through 8th grade.
- Where:** Tree of Life Lutheran Ministry Center
1 South Broad Street, Middletown, DE 19709



Questions?? ... Grace Cilento 302-378-6107

Email... treeoflifelc@verizon.net

DECEMBER SCHEDULES

Acolyte

Dec. 3 Ray Van Came
 Dec. 10 Vincent Salemink
 Dec. 17 Tommy Young
 Dec. 24 **A.M.** Michael Matheny
 Dec. 24 **P.M.** Sabina Schill
 Dec. 31 Tommy Young



Reader

Dec. 3 Nancy Nadel
 Dec. 10 Deb Trovinger
 Dec. 17 Jim Pileggi
 Dec. 24 **A.M.** Dallas Dean
 Dec. 24 **P.M.** Sylvia Schill
 Dec. 31 Gene Zaiser



Ushers

Dec. 3 Bruce Blair / George Matz
 Dec. 10 Bill Glass / Bob Trovinger
 Dec. 17 Mark Cilento / Gerrit Salemink
 Dec. 24 **A.M.** Fred Jahn / Werner Schiedt
 Dec. 24 **P.M.** **VOLUNTEERS NEEDED**
 Dec. 31 Carolyn Lewis/Tom Young



Fellowship

Dec. 3 Cindy Koch
 Dec. 10 Sarah Frndak
 Dec. 17 **VOLUNTEER NEEDED**
 Dec. 24 Janet Parks
 Dec. 31 Dave & Kim Watson



Children's Church

Dec. 3 Johanna Salemink
 Dec. 10 Donna Lintz
 Dec. 17 Renee & Nichole Baker
 Dec. 24 Renee & Nichole Baker (*morning service only*)
 Dec. 31 No Children's Church



December 2006

Sunday	Monday	Tuesday	Wednesday	Thursday	Friday	Saturday
					1	2 8 a.m. Christmas Parade Outreach
3 9:15 a.m. Sunday School 10:30 a.m. worship Noon Choir practice TOL 6:30 p.m. Confirmation	4	5	6	7	8	9 6:30 p.m. Kid's Club - Gift making
10 9:15 a.m. Sunday School 10:30 a.m. worship Noon Choir practice TOL	11	12	13 7p.m. Cantata Rehearsal	14	15	16 9 a.m. Cantata Rehearsal
17 9:15 a.m. Sunday School 10:30 a.m. worship Noon Choir practice TOL 4 p.m. Christmas is Forever	18	19	20	21	22 6:30 p.m. Live Nativity 7:30 p.m. Caroling in the square	23
24 9:15 a.m. Sunday School 10:30 a.m. worship	25	26	27	28	29	30
31 9:15 a.m. Sunday School 10:30 a.m. worship						

ADMINISTRATION

COMMUNICATIONS



Have you noticed...our tree logo is everywhere...we always use the Georgia font...we are regularly advertising upcoming events and special worship services in the Church News section of the Transcript...there are pictures of your fellow church members in the Transcript after special events... Take a look around. Tree of Life Lutheran is making a mark in the MOT Community.

Advertising committee events and getting the Word out is of the utmost importance to us all. We invite you to have your publications proofed before they are distributed either within the church or out in the community. In addition, if you have an event, meeting, or picture that needs to be included in the Burning Bush, The Transcript, or our web site, please submit your information at least 2 weeks in advance of the event. And,

would you love to have your information included in the monthly newsletter. Please submit this information by the 15th of each month. We even have a process by which we can meet your copying needs. If you have questions about any of these areas, please contact the person below that best meets your needs. By striving to meet these deadlines, we can insure that all necessary information makes it into the appropriate pieces of communication—both within and outside the church.

The Transcript, Web Site and Proofing

Kim Watson—
dekwatson@verizon.net

Burning Bush

Sylvia Shril—sylsch@gmail.com

Newsletter

Donna Parks—
deparks@potteranderson.com

Photocopying Needs

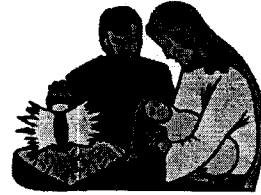
Johanna Salemink—
mailing_copy.tollc@verizon.net



CHRIST IS BORN! **Christmas Eve**

Sunday December 24th

Please join us for a Candlelight Service
held at the Ministry Center



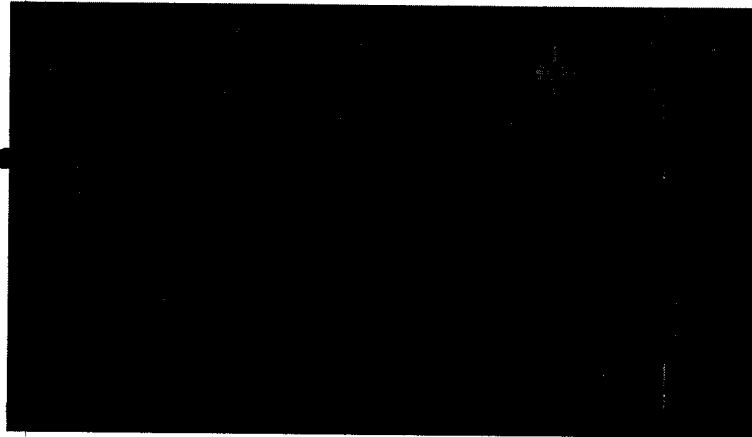
**5:00 PM Lessons and Carols
with Communion**

Tree of Life Lutheran Church Ministry Center

1 South Broad St.

Middletown, Delaware

(302) 378-3345





mother last month. monetary gifts to LCS. This is really humbling. Thank you for your expressions of grief, care and love. It was a special thing to know of your support.

*Thank you very much,
Gerrit Salemink*

Dear Tree of Life Members,

For three years now you have been my home away from home. That reality became all the more clear through your expression of support at the loss of my grand-

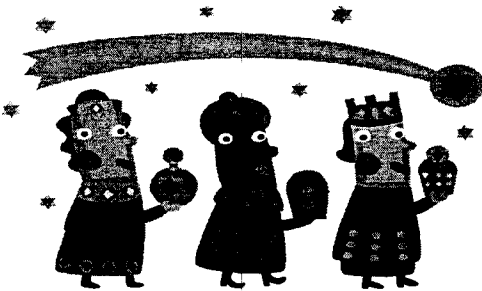
*Blessings to you,
Pastor Jennifer*

Thank you for the donation of \$50 to Lutheran Campus Ministry at the University of Delaware. Your gift goes far toward the work of the Lutheran Church in higher education. We are grateful for your continued support.

*In Christ's Service,
Pastor Bruce Heggen and
Board Members*

TREE OF LIFE LUTHERAN CHURCH

GIFT MAKING PARTY



What: Come make gifts for family and friends while your parents go shopping and decorate the house for the Holiday Season.

When: Saturday, December 9th
6:30 p.m. to 9:00 p.m.

Who: We welcome children through 8th grade /

Where: Tree of Life Lutheran Ministry Center
1 South Broad Street, Middletown, DE 19709

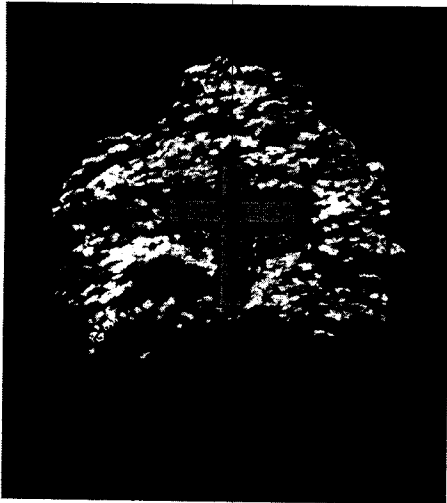
RSVP by Dec 3rd... Grace Cilento 302-378-6107
Email... treeoflifelc@verizon.net

Tree of Life Lutheran Church

1 South Broad Street,

Middletown, DE 19709

(302) 378-3345 / treeoflife@verizon.net



STAFF

Jennifer Carlson, Pastor

Duane Dillard, Director of Worship & Music

COUNCIL

Gerrit Salemink, President,
Administration

Kim Watson, Vice President

Gene Zaiser, Treasurer

George Matz, Secretary

Mark Cilento

Bill Glass

COMMITTEE CHAIRS

Children and Youth

Grace Cilento and Cindy Koch

Stewardship/Finance Gene Zaiser

Outreach David Watson

Worship & Music Sylvia Schill,

Communications Kim Watson

The Seniors Group Jim Raun

Building Committee David Watson

VOLUNTEERS

Sylvia Schill Burning Bush

Dot Schreppler Copier

Mary Ellen Raun Worship Folder

Donna Parks Leaflet Editor

Nancy Nadel,

Worship Assistant Coordinator