



November 2011

Inside this Issue

Calendar	6
Councils Corner	2
LCS	3
Nurture	4
Outreach	4
Schedules	5
Staff and Committees	8
Worship & Music	3

Tuesday, November 1
Worship & Music Mtg.

Sunday, November 6
Consecration Sunday (pg 2)

Monday, November 14
Council Mtg.

Tuesday, November 15
Submission Deadline for
December Leaflet

Thursday, November 24

THANKSGIVING

Sunday, November 22
Aluminum Can Collection

The Leaflet

Giving Thanks for the One-on-One

I love to send and receive notes and cards in the mail. There's just something about getting a personal, written greeting amongst the bills and clutter that arrives each day in my mailbox. Throughout my life I often wrote to my grandmother. It started with sending her thank you notes as a kid – a task that was always fraught with a bit of anxiety as my grandmother was a schoolteacher and, on more than one occasion, my sister and I had our thank you notes returned with red-penciled corrections!

Also, let me tell you that I am the youngest of four grandchildren on my mother's side of the family. However, since all four of us were born within 19 months, I'm not sure anyone can seriously say whether they are the oldest or the youngest. Anyway, although the youngest, I was the first to move out and get my own apartment. That being said, I was the first to be given permission to hunt up whatever old furniture was in my grandmother's attic to furnish my new home. (Yes, the same grandmother who sent me red-penciled notes.) The "prize" of the attic forage was a round, oak, pedestal table and two cane bottom chairs for my dining room.

Shortly after moving into my new place, Thanksgiving rolled around and I sent out Thanksgiving Day cards to my friends and family. The picture on the front of the card I sent to my grandmother was of a round, oak, pedestal table and two ladder back chairs -- very much a replica of what was now in my little dining room. Nothing was said about the card (and no, by now I didn't get corrected returns), but the following year when Thanksgiving again rolled around, I was opening the mail and there was a card from my grandmother. To my surprise it was the same card that I had sent the year before -- the one with the oak table and chairs. She had just signed and dated it and sent it back; saying it was such a

(continued on page 7)

Council's

o
r
o
r
e
r

Church Council met on October 10. After opening with a Bible Study and a review of meeting minutes and treasurer's report, we discussed the proposed Tree of Life signage for along Osbourne Street and Route 13 N. We reviewed sketches of the proposed signs as well as pricing. Although the estimate for the signs is reasonable, the Council would like to consider additional proposals for the installation of lighting for the sign on the corner of Osbourne Street and Route 13 N. Council has asked Bruce Blair to gather some more information and we hope to have the signs erected soon.

The Council reviewed some of the changes to the worship service. After much discussion, Council recommends eliminating the Children's Sermon during the worship service, and instead dismissing the children to go to Children's Church before the pastor starts the sermon. The adult leading Children's Church will take the children to the classroom. Council also discussed the new bulletin format. Council is concerned that the new format is more difficult for visitors with the separate Celebrate insert along with the Burning

Bush. Council is recommending a return to one stapled worship folder and using the hymnals. Council also discussed ways to make communion smoother and more efficient. Some suggestions included dismissing each side of the altar separately, or trying a continuous communion. The Council could not reach a consensus and will discuss this at its next meeting on November 14. Please let a Council member or Sylvia Schill, Chair of the Worship & Music Committee, know of any thoughts you may have on these matters.

Carolyn Lewis shared Stewardship information for Consecration Sunday, November 6. The Council hopes all members will attend this service and the luncheon afterward. Our financial gifts are essential as we plan our budget and our mission activities for the next year.

Carolyn Lewis and Nancy Nadel will be attending the "Partners in Mission" workshop on November 12. This Synod-led workshop will help us with our efforts to talk about our faith and invite others to join us on our journey.

*Nancy Nadel
Council Co-President*

On November 6, 2011, Consecration Sunday, we will all have the opportunity to cheerfully demonstrate our faith by placing on the altar a small portion of what God has freely given us. Following our service we will come together for a meal to enjoy fellowship and celebrate being God's people.

Please mark November 6th on your calendar as Consecration Sunday and plan to attend.

Faithfully,
Gene Zaiser



Bridge of Hope Produce Distribution Climbs

The LCS Bridge of Hope monthly produce distribution has shown amazing growth since it started last summer. In August, it served 49 families (120 people). In September the number of families climbed to 63 (150 people). Then in October it grew even more – 71 families (198 people). Wow. But keep in mind the numbers are high because the need is so great. Bridge of Hope Grocery Club is a partnership between LCS and New Cavalry Baptist located in Wilmington’s troubled Southbridge neighborhood.

Almost Final Tally for the 2011 Hunger Walk/Run

We say “almost final” because we expect some funds to continue to trickle in, but at this moment (October 14), our count tells us that the Walk Run raised \$47,900 and was attended by 326 people. That’s a record number of people! Regarding a record for funds raised, at this point it’s too close to call. LCS extends sincere

thanks to all who attended, contributed, walked, ran or helped out. We couldn’t do it without you! A footnote: What about the excess t-shirts? After all was said and done, there were 30 left over t-shirts. This year they are going to Haiti in one of the Orphan Grain Train containers, thanks to Pastor David Kummer of Concordia.

It Takes a Lot of Volunteers...

Q: How do we do so much with such a small staff? A: We have many wonderful volunteers! According to Sandy Betley, Program Director at our 1304 Rodney St. headquarters, *“Acme in Trolley Square reliably gives us breads and pastries daily for the St. Stephen’s pantry, and now they are also giving us a large quantity of frozen meat each month (like 15 cases!). One DuPont office increased its involvement by “adopting” LCS as its non-profit to assist for the year. Vanguard has sent volunteers to help out at St. Stephen’s produce, and CitiBank is working out the logistics to do the same. We have two volunteers each week from job placement programs that bag and stock at the St. Stephen’s and Zion pantries. And Tower Hill School is collecting food for us at the Hiller Harvest.”*



Take A Hymnal, Please.

Have you ever tried to remember the name of a hymn that you particularly like. When asked for submissions for the Hymn Bin do you wish you could flip through a hymnal to jog your memory of the title of a song? Well now you have the opportunity to take a hymnal for your very own. The bookcase in the hallway near the Sunday School room is full of the green hymnals that we are no longer using. Please feel free to take one or two home with you to keep as your own.

Grocery Club

The next food sorting is
Tuesday, Nov. 8th at 10 a.m.
Grocery Club distribution is
3:30—5:30 PM on
Thursday, Nov. 18th/

Thanksgiving needs include donations of 4 turkeys and 24 stuffing mixes. And, of course, donations of peanut butter and cereal are always a help.



DUST BUSTERS

November Schedule



<u>Week of</u>	<u>Team #1</u>	<u>Team #2</u>
Nov. 6.	Baker	Zaiser
Nov. 13	Glass	Kessler
Nov. 20	Matz	Campbell
Nov. 27	Schill	Young

↓ OWLS luncheon outing to Sambo's in Leipsic, DE, on Sept. 29. Stay tuned for more upcoming OWLS events. ↓



NOV. SCHEDULES

Acolyte



Nov. 6 Jared Kessler
 Nov. 13 Kimberly Cilento
 Nov. 20 Mackensie Blair
 Nov. 27 Erin Rinaldi

Worship Assistants



Nov. 6 Jim Pileggi
 Nov. 13 Scot Kessler
 Nov. 20 Edwin Kruah
 Nov. 27 Dallas Dean



Ushers

Nov. 6 Bruce Blair / George Matz
 Nov. 13 Bill Glass / Bob Baker
 Nov. 20 Mark Cilento / Bob Trovinger
 Nov. 27 Bill Marvel / Werner Schiedt

Communion Cup Assistant

Nov. 6 George Matz
 Nov. 13 Bruce Blair
 Nov. 20 Bill Glass
 Nov. 27 Mark Cilento



Counters



Nov. 6 Schiedt
 Nov. 13 Campbell
 Nov. 20 Schiedt
 Nov. 27 Campbell

Fellowship



Nov. 6 Cindy Koch
 Nov. 13 Janet Parks
 Nov. 20 Joan Marvel
 Nov. 27 Mary Jane Schiedt

Altar Guild

Nov. — Jerry & Maxine Campbell



Just a reminder to all volunteers. If you are not available on your scheduled date, please swap with someone on your team. Please do not contact your committee chair to request a change in the scheduled rotation.

NOVEMBER 2011

	<i>Mon</i>	<i>Tue</i>	<i>Wed</i>	<i>Thu</i>	<i>Fri</i>	<i>Sat</i>
		1 7 pm Worship & Music Com. Mtg. 	2	3 7:30 pm Choir Practice 	4	5
6 ALL SAINTS DAY CONSECRATION SUNDAY 9:30 Bible Study 10:30 Worship 6:30 Confirmation	7 3 pm Bible Study	8 10 am Grocery Sorting	9	10 7:30 pm Choir Practice 	11	12
13 9:30 Bible Study 10:30 Worship	14 3 pm Bible Study 6:30 pm Council Mtg. 	15 Submission Deadline for December Leaflet	16	17 3:30 pm Grocery Club Distribution  7:30 Choir Practice 	18	19
20 9:30 Bible Study 10:30 Worship 6:30 Confirmation	21 3 pm Bible Study	22	23	24  THANKSGIVING	25	26
27 9:30 Bible Study 10:30 Worship Aluminum Can 	28 3 pm Bible Study	29	30			

(One-on-One continued page 1)

nice card why not reuse it. Well, the challenge was on. I saved the card and sent it back to her the following Thanksgiving. You know, we sent that card back and forth with a new signature and date for 13 years. When my grandmother passed away, I found the card in her desk drawer.

My grandmother had various types of relationships with a lot of people during her lifetime and was a wonderful and loving grandmother to us all. But when I look at that Thanksgiving card that now resides in a frame in my home, I think of my grandmother and our special one-on-one relationship.

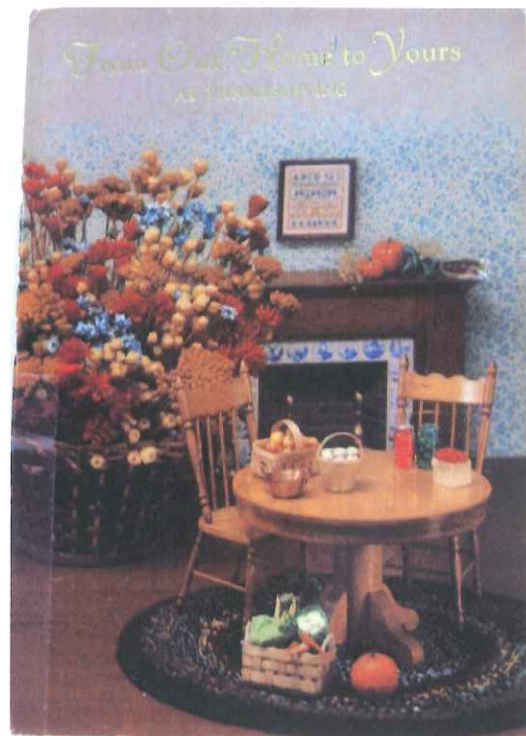
We often think of God as being big and caring for us all; being global. But God has a one-on-one relationship with each one of us as well. Sometimes we are so busy running around involved with our lives that we forget to talk to God or remember that He's there waiting for us to remember how much He loves us and is there for us at anytime, 24/7.

I average a 45 minute commute each way to and from work. Sometimes there's a glitch and it's even longer. And like you, while I'm busy doing the commuter race from Middletown to Wilmington and back, taking care of my home, running to the grocery store, doctors' appointments, church meetings, and the many other tasks that keep us so busy, I can sometimes forget to talk to God and remember how great He is. Not just how He is with us all – as a group – but also how much he cares for us individually. How wonderful our one-on-one relationships are.

In spite of my preoccupation with my busy life, I have found when the racing to and fro starts to build up, that's when God sends me a reminder. Seeing a field of soybeans with the perimeter lined with blooming sunflowers – that's God sending me a subtle reminder that He's there. Or, when I'm crossing the Roth Bridge, taking the exit to Lorewood Grove Road and I see a beautiful, multi-colored sunset that makes me smile and think, "is anyone else seeing this?", there is God in all of His glory saying "hello, how was your day?".

At this time of the year when we are giving thanks for our many blessings, let's not forget our special one-on-one relationship with God. It truly is amazing and something very special to be thankful for.

Donna Parks



Tree of Life Lutheran Church

P. O. Box 64
505 Osbourne Street
Odessa, DE 19730-0064
(302) 378-3345 / treeoflifelc@verizon.net
www.tollc.org.



STAFF

Arreon Harley, Music Director
Elizabeth Zaiser, Sunday Nursery
Nancy Chalfant, Administration
Pastor Jack Little, Pastoral Care

COUNCIL

Carolyn Lewis, Co-President
Nancy Nadel, Co-President
Gene Zaiser, Secretary & Treasurer
Peg Jahn
Scot Kessler
Jack Little
Jim Pileggi
Greg Zentz

COMMITTEE CHAIRS

Building Committee	Bruce Blair
Christian Education	Nicky Zaiser
Communication	George Matz
Dust Busters	Mark Cilento
Interior Review	Janet Parks
Mutual Ministries	Mark Cilento
Nurture	Janet Parks
Outreach	Mark Cilento
The OWLS	Janet Parks/George Matz
Stewardship/Finance	Gene Zaiser
Worship & Music	Sylvia Schill

VOLUNTEERS

Burning Bush	Pam Nichols
Financial Secretary	Deb Trovinger
Leaflet Editor	Donna Parks
Worship Assistant	Nancy Nadel
Coordinator	
Worship Folder	Gail Russell